

Summary of the October 2022 for KY K-12 Education Technology Leaders' Virtual Meeting

In case you missed it or want a refresher, the following is what we talked about during the October 18, 2022, EdTech leaders' virtual meeting. A copy of the video and audio can be found at: <https://mediaportal.education.ky.gov/technology/district-technology-leadership-webcast/2022/10/edtech-webcast-october-18-2022/>.

Public viewing of the archived webcasts and written summaries are also available on the KDE Media Portal at: <http://mediaportal.education.ky.gov/>. Numbers in **RED** indicate the timestamp for that portion of the discussion so it can be easily located on the full digital recording.

This was a virtual meeting with our OET staff and all the districts joining via Microsoft Teams and/or YouTube. We will continue to make these available from our KDE media portal so that you can watch the archived discussion and share with the appropriate people in your district. Several GoSoapBox poll questions were posed throughout the meeting and district EdTech leaders were asked to respond to all the questions as it assists us in planning and getting a feel for how to best move forward. Your voice and your feedback are important and extremely helpful to us. Please remember that in addition to these webcasts being available on the KDE Media Portal, each month's webcast is accompanied by these written summaries. We encourage you to share the link and all or any portion of these summary notes with staff throughout your district who may find the information beneficial to them in their position.

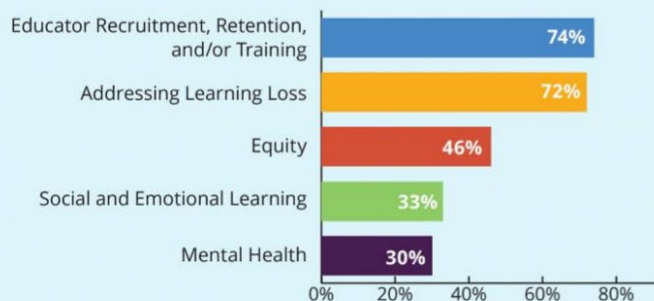
(1:09) State Education Technology Directors Association (SETDA) Report/Comparison to KY K-12 District Responses – Last month we covered the SETDA survey responses and posed similar questions to our edtech leaders through GoSoapBox; however, we didn't review the response comparisons. David and Marty shared the Comparison of EdTech Trends document that includes the responses from the national survey in comparison (charts on the left) to our KY K-12 CIO/edtech leaders' responses (charts on the right). Please follow the audio to hear the full discussion on this topic.

- Equity has been in the DNA of the Kentucky Education Technology System (KETS) since 1992; therefore, it should not be surprising that pursuing Digital Equity in KY K-12 is such a low percentage (i.e., 2%) as compared to the other 49 states SETDA number (i.e., 46%). Addressing learning loss took the top spot in our KY K-12 district responses to the similar SETDA question. Equity has been a founding principle within the KETS system, so that KY K-12 CIOs/EdTech leaders' response being so low (i.e., 2%) is not an indication that we don't value digital equity in KY K-12; it's more that it's been a long standing premise of the KETS program that has been a top priority each year for the past 30 years.
- Internet connectivity is another example of where KY K-12 didn't have to make this an initiative like other states because equity has been our focus since the birth of KETS. Also, compared to the other 49 states, we have a more statewide view and emphasis of cybersecurity in comparison to the other 49 states.
- Maximization of our education technology tools is one of our KETS 2018-2024 Master Plan Areas of Emphasis. This is also part of what we capture and evaluate through our annual feedback from all 171 districts. The recent influx of federal funds allowed to go toward education technology has had a huge impact.
- OET's equivalent position in other states and their OET equivalent staffing say that they are considered important to their DOE leadership, but in KY K-12 we show it is very important. This is evidenced by David reporting directly to the Commissioner of Education and 85% of our districts responding that edtech priorities are important to their senior leadership.
- Throughout the KETS program we have strived to strategically provide statewide shared services and product standards.
- Approximately 80% of our KY K-12 CIOs report directly to the Superintendent. At the DOE level in the 50 states only 27% of the DOE level CIOs/EdTech leaders report directly to the Commissioner.

SETDA Reports...

In 2022, states are strongly focused on two main topics: educator recruitment and retention, and addressing learning loss.

TOP EDUCATION PRIORITIES



NOTE: The SETDA survey had multiple selection options whereas the Kentucky interactive question only allowed for one "top" selection.

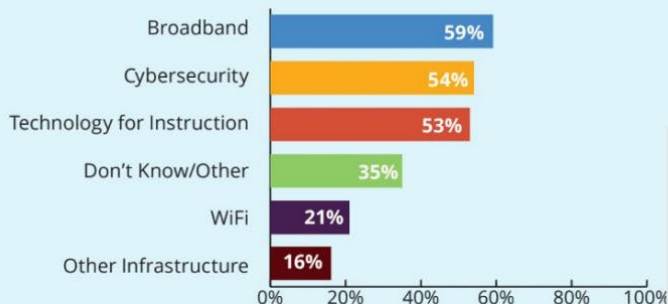
Kentucky reports (Sept. 2022)...

3. What would you say are your district's top education priorities for 2022-2023 school year? (SETDA)

CHOICE	VOTES	%
Educator Recruitment, Retention and/or Training	35%	<div></div>
Addressing Learning Loss	58%	<div></div>
Equity	2%	<div></div>
Social and Emotional Learning	4%	<div></div>
Mental Health	2%	<div></div>

SETDA

DOES YOUR STATE HAVE EXISTING INITIATIVES RELATED TO ANY OF THE FOLLOWING TOPICS?



NOTE: The SETDA survey had multiple selection options whereas the Kentucky interactive question only allowed for one "top" selection.

4. For Education Technology in your district, what are your top initiatives? (SETDA)

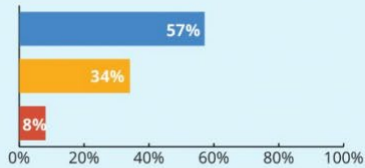
CHOICE	VOTES	%
Broadband/ WAN/ Connectivity	0%	<div></div>
Cybersecurity	25%	<div></div>
Technology for Instruction/ Digital Learning	53%	<div></div>
Wifi/ Wireless Infrastructure	14%	<div></div>
Other Infrastructure	4%	<div></div>
Don't know/ Other	4%	<div></div>

EVALUATING USE AND EFFECTIVENESS OF EDETECH

We have a lot of edtech programs and products, but we don't always use them effectively

We use technology in a variety of impactful ways

We need more edtech in our state



SETDA

How many states do not collect data on use or effectiveness of edtech tools?


19

How many collect at least some data on both use and effectiveness?

8



5. Do you collect data or review data on use or effectiveness of EdTech tools? (SETDA)



CHOICE	VOTES	%
Yes! We have it and review it regularly.	22%	<div></div>
Yes, we have it - but do not use or review it much.	10%	<div></div>
Yes, we look at usage, but don't really have what we need to understand effectiveness.	20%	<div></div>
Kind of. We have some data, but are lacking a full picture.	43%	<div></div>
Not at all.	0%	<div></div>
Not sure.	6%	<div></div>


46%

say edtech priorities are important to SEA leadership.

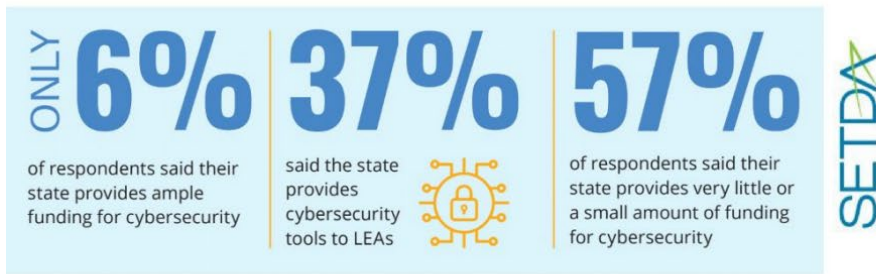


SETDA

6. Would you say EdTech priorities (and initiatives) are important to your district leadership? (SETDA)



CHOICE	VOTES	%
Yes	85%	<div></div>
No	6%	<div></div>
Not sure.	10%	<div></div>



7. Does our state provide ample support and shared services (which includes funding and tooling) for cybersecurity? (SETDA)



CHOICE	VOTES	%
Yes	77%	<div></div>
No	23%	<div></div>



	Yes	No
3. Does the Ed Tech Leader report directly to the superintendent?	141 (80.6%)	33 (18.9%)

(11:42) Data Systems Update –

- 2021-2022 School Report Card (SRC) -
 - Oct. 13 – District embargo opened
 - Oct. 14 – Media embargo opened
 - Oct. 17 – KDE media opportunity mid-day; embargo ended 11:59 p.m. ET
 - Oct. 18 – Public release – SRC did open for public release and it is performing a little slow. All of the data is available and BrightBytes is working on the issue. The accountability page has been

revised the most using the dials along with a new accountability model put in place by our Legislature. If you see something incorrect, the collector tool is now open and you can go back in and make corrections. One ask of the technology staff is to ensure that the SRC links are updated and pointing to the current card. There will be another launch with the financial data in May. Visit the [KSIS School Report Card Resources webpage](#) for the 2021-2022 timeline, communications and other resources. There are some statutorily required steps regarding the distribution of SRC data and data availability. We did have a discussion question on this topic:

1. Please share any questions or early feedback you have or have received regarding the 2021-2022 School Report Card that was publicly released today.

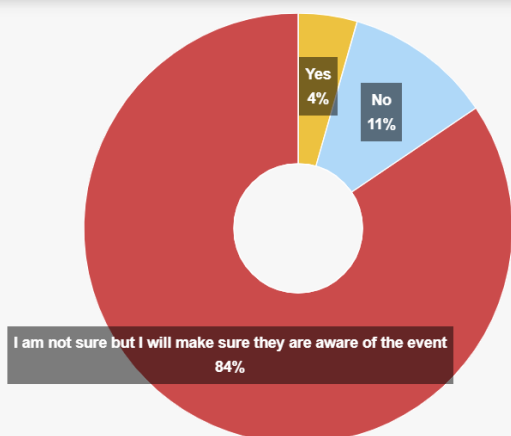
Replies

Just an FYI...I am on the site right now, checking the report cards for my district. So far I have only gotten one to open. The others are just spinning. I am sure that the site is getting a lot of traffic today, but it could be having issues.

- School Profile Report – Due in by October 1 and these have to be signed by the SBDM, the principal and the Superintendent; these reports are available now.
- Office of Civil Rights data is soliciting some additional feedback and the public comment period ends at the end of October. Please take a look at that and be prepared for the next reporting period to open up in December.
- For details on upcoming training opportunities, go to the [KSIS Training webpage](#).
 - Dec. 1-2 – Infinite Campus 2022 Interchange, Omni Louisville Hotel
 - Jan. 12 – KSIS Infinite Campus Ky.-Specific Mid-Year Training – Accepting presentation topics
 - Nov. 3 –Kentucky Parchment Connect –The Kentucky Department of Education and the Council on Postsecondary Education (CPE) are inviting high school counselors, post-secondary admissions officers, registrars and other members of the education community to attend. The event is free and provides an opportunity to connect with peers, learn best practices and explore emerging trends in education and credentialing. Parchment is the Kentucky standard for high school electronic transcripts. The University of Louisville is hosting this event and Parchment will provide free parking and lunch. Please encourage participation from your district. [Register now to save your seat at Parchment Connect Kentucky](#).

1. Are high school counselors in your district planning to attend the November 3 Parchment Connect event?

45 responses recorded

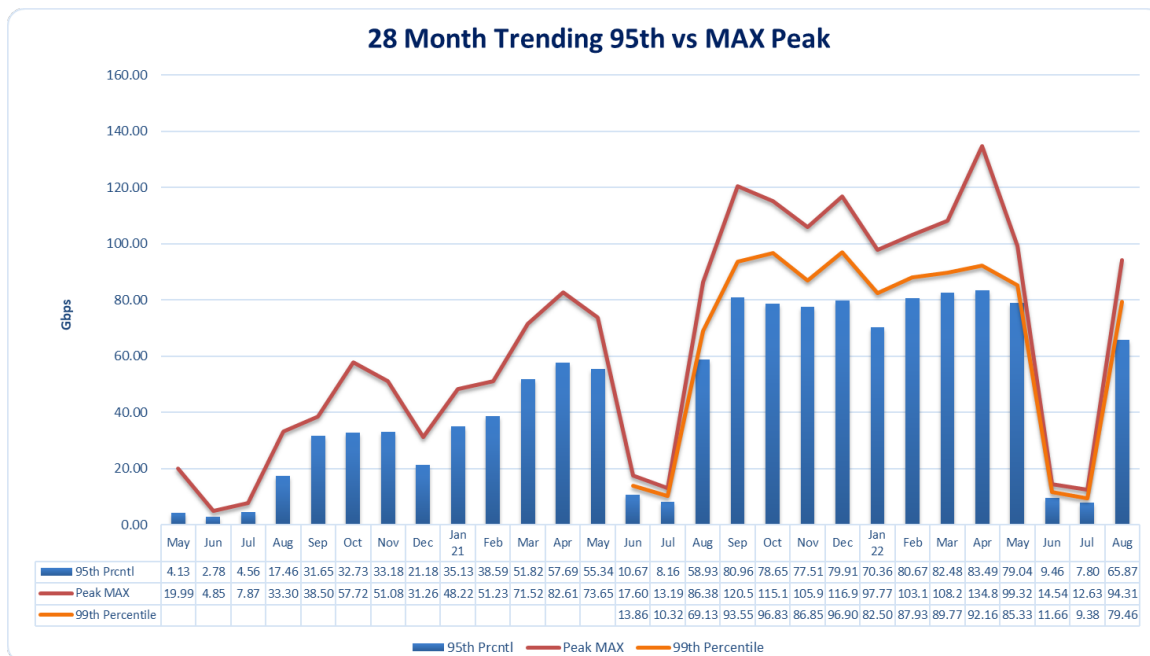


- October is Cybersecurity Awareness Month - Visit the U.S. Department of Homeland Security's Cybersecurity and Infrastructure Security Agency's [Cybersecurity Awareness Month webpage](#) for cybersecurity tips and tricks.

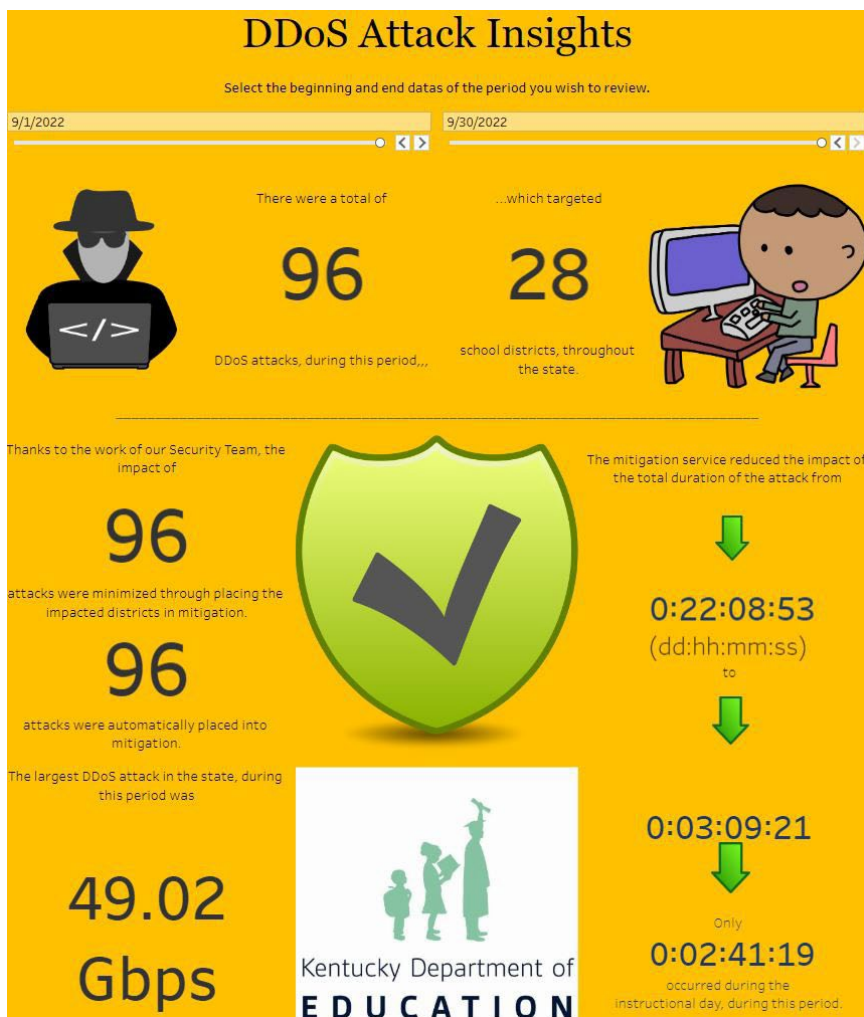
(19:34) Kentucky Society for Technology in Education (KySTE) Update – Neil Arnett joined us and promoted the Fall KySTE one-day event. Registration closes October 18th and the theme is “Adventure Awaits – Fall Base Camp”; the event is capped at 600 participants. There is a panel discussion and then some topic-specific breakout sessions in the afternoon. We'll be in Lexington at Central Bank Center on November 4th and look forward to seeing everyone. Dr. Marty Park will be delivering the opening keynote address.

Spring event is coming up and session proposals are due by November 1st; we are looking forward to an amazing lineup of presentations. Outreach grants proposals are open and due by December 1st. Impact Award nominations are also open at this time.

(26:11) KY K-12 DDoS Report – DDoS or Distributed Denial of Service is a category of malicious cyber-attacks that hackers or cybercriminals employ in order to make an online service, network resource or host machine unavailable to its intended users on the Internet. This year we have over 50% of our school districts that have had 100% uptime and we only have one district that is below 99% uptime. Over the last 28 months we have had a big increase in usage with a big decrease in June and July. This year, we have over 50% of our districts with 100% uptime during instructional hours. We only have 1 school district that was below 99%.



The graphic below is showing details of DDoS attacks for the month of September; 96% of these DDoS attacks were automatically put into mitigation without districts having to initiate any action. Our vendor partner does an extremely efficient job in handling the mitigation efforts. We always see a spike at the beginning of the school year; however, the pure number of attacks has increased overall. The largest attack in the last 12 months was a 303Gbps attack; this would have completely shut down our network.



(32:46) Security Baseline Project Update - Several months ago we started on this journey and part of what we have to continue to do is educate and coach our end users to protect their identities. We are 102 districts into the enablement phase of this multi-phased approach. We began with the purchase of licenses and then Microsoft came after that with professional development. There have been small group and one on one sessions. Today we wanted to remind folks, especially those struggling, about the following points of emphasis:

1. Open Office hours each Friday for any questions or assistance districts need (as a supplement to the small-group IT Readiness Sessions and dedicated 1:1 training session from Microsoft)
2. Open Office hours to be extended through February 2023 for districts that are enabled in November/December
3. Post-Training assessment surveys need to be completed by all to help identify additional assistance needed. This will help us identify those districts that may need some additional or follow-up assistance.

We are in a race against time to get these baseline security functions in place. We are completing these same steps within KDE the agency. A key point that is happening--Bob Hackworth is not the only person concerned about cybersecurity – it is a HUGE team effort. As we are rolling out MFA, it is a great time to coach up your staff using the resources that have been provided and shared with you.

3. For those of you have been through the initial rollout of the Security Baseline Project, when do you believe you will start to rollout MFA to your staff?

45 responses recorded

CHOICE	VOTES	%	
We have already rolled out MFA to all staff	19	42%	<div></div>
We have begun to roll it out to staff	8	18%	<div></div>
We have scheduled the roll out	3	7%	<div></div>
We have not scheduled the roll out yet	15	33%	<div></div>

It is good to see that many of you are moving forward and would offer that you reach out if you have a roadblock and need some assistance/guidance.

4. For those of you who have been through the initial rollout of the Security Baseline Project, what sorts of obstacles, if any, are preventing you from rolling out MFA to your staff?

Replies

For staff that had already utilized their school email with the Authenticator App, (i.e. for KAAC Academic Testing), they were not ever prompted for more information when MFA was rolled out. They were also never locked out" when not on the network. We went into the security settings on their computer (on network) and asked that a text be sent to their cell. That worked, but because they were not prompted and were never "locked out" I can not be 100% sure that everyone has some type of fail-safe in place.

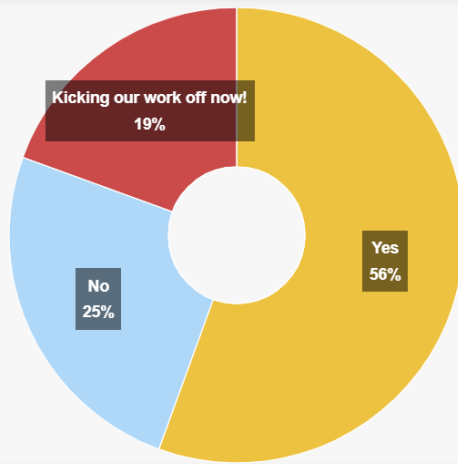
October is Cybersecurity Awareness Month. We encourage you to visit the U.S. Department of Homeland Security's Cybersecurity and Infrastructure Security Agency's [Cybersecurity Awareness Month webpage](#) for cybersecurity tips and tricks. The theme for this month is **See Yourself In Cyber** and it points to the central theme that this is something we all must do.

It is also DigCitCommit week and this is in alignment with our earlier discussion about cybersecurity. Schools can earn/claim the #DigCit STLP Level Up Challenge badge this week; visit <https://stlp.education.ky.gov/levelup>.



2. DigCitCommit week is this week, nationally. Obviously, for Kentucky Public Schools, digital citizenship is deeply woven into our core fabric and is not just a week long disconnected focus. Do you feel like you are on track with DigCit Commitment?

36 responses recorded



(50:41) Status of 2022 KY K-12 Digital Readiness Report – All of the data has been submitted and our field staff have done an excellent job in working with our data stewards in validating and cleansing of the data. We are now packaging the data so it can be reported in the Data Readiness application. The comparative analysis component will be in production very soon and we are building a story that we'll incorporate into our infographic. We'll spend more time in our November webcast covering the results of this report and the story it tells!

Our next big thing will be the annual feedback collection and the field staff will be providing that link/information to you. We use this crucial feedback to build our CIO Summit agenda and to drive our work. In addition to the district feedback, we receive this feedback from all of the OET staff and every KDE office.

3. With district submissions of the Digital Readiness Survey (DRS) and Technology Activity Report (TAR) just completed, what surprising take-aways or trends did you discover from this year's data collections?

Replies

Its worth noting in some district discussions that HUGE student device counts don't necessarily mean they're all in production. At any given time, devices can be in need of repair, part of a dedicated 'spare pool' or in the process of being cannibalized for parts to help maintain other devices due to lack of parts availability. Device counts should stabilize over time as the supply chain stabilizes. - Jody

We spent an unbelievable amount of funds from all available sources to support and elevate ED Tech access across every classroom. Wow. Quantitative evidence for why tech departments are exhausted statewide.

(54:48) Follow-up: Nintendo Switch/PlayStation/Xbox and Cybersafety - We spent a good deal of time on eSports during our September webcast. Shortly after the webcast, we began researching the cybersecurity and cybersafety of these devices. This is an area in the eSports gaming arena that must always be considered for any game. A matrix begins developing as we continue to work on this that includes who owns the Internet component, who owns the console/device, and then where is the eSports game/event being played. We are conducting some testing/piloting at the district level this week and hope to be able to share a simplified matrix

to our eSports coaches and CIOs very soon. Marty used the practice/scrimmage/game concept to describe the differences in the field of play. We are trying to capture all of these scenarios within this matrix to ensure we are addressing this at all levels of play as well as ensuring that we are following our Internet content management and FERPA laws. We will continue to work in this emerging space along with the Kentucky High School Athletic Association (KHSAA) and the vendor partner managing eSports (i.e., PlayVS).

(1:08:04) Stilwell Recognition in Districts – We are having a great time in seeing how your regions/districts are celebrating and recognizing the recipients of these meritorious service medals. We are so appreciative of your going above and beyond during that time and it is small way to show our thanks. We will be celebrating our Red Suspender Day soon so get your red suspenders ready!

(1:10:34) Lexington Herald Article about KY K-12 Internet access – The Lexington Herald Leader published an article regarding KY K-12's Internet service on October 14th. They counted totally on a news source located outside of KY (i.e., Stacker) without confirming the accuracy of that Stacker information with the actual organization (i.e., KDE) that oversees the Internet access hub to all 171 KY K-12 school districts and KDE organizations. This is very problematic since that article inaccurately characterized our Internet speeds in 165 of our 171 KY K-12 school districts as being "slow" and thus "effectively and regularly" not allowing our KY K-12 students, teachers and staff in those 165 districts "to engage in digital classroom learning". This Lexington Herald article also unfortunately went the next step to inaccurately identify 10 of our KY K-12 districts by name as having the "slowest" Internet speeds and thus significantly impacting their students' digital learning experience in their classrooms. Our intention is to first get with the leadership of these 10 districts and let them know they have been inaccurately identified in this Lexington Herald article as being one of the worst districts in KY K-12 regarding having "slow" Internet that is regularly negatively impacting the quality of the digital classroom learning in their schools. Our second priority is to meet with the editor of the Lexington Herald Leader and then respond in writing to them with an Op-Ed about this specific Lexington Herald article for the public to read. We also intend to get with other news sources to educate them on this topic as a precautionary measure to help prevent a similar type of article being printed by that news organization.

Our top ask of any KY or national news source is to first approach the Office of Education Technology in KDE before publishing K-12 education technology related articles to get balancing and accurate information since KDE oversees the Internet service to all 171 school districts and KDE organizations (KSD, KSB, Area Technology Centers). All are already connected to the Internet with a high quality, reliable, fast enough, fibered service. In 1995 KY K-12 was the first state to connect 100% of its public school districts to a high-speed Internet service. Since every KY K-12 district office and school is fibered, KDE has the ability to both gradually and quickly increase the Internet speed that is needed per student across the state as it is needed. KDE closely looks at Internet use by each district each month to determine if the district does or doesn't need to have their Internet bandwidth increased. In September 2022 (see the chart below), KDE asked all 171 school districts about their top pressing EdTech needs/priorities and 0% of our 171 districts identified Internet access or speeds to their district as a pressing issue to their district.

There is a major difference between the Internet speed that you need in 2022 to do educational related tasks each day and a future amount of Internet bandwidth that may be needed in 10 years, but is not needed now. If you are on an Interstate three-lane highway going north and every car on that road can constantly go the speed limit (i.e., 70 mph) 24 hours a day, without ever slowing down or ever being stopped and always reaching the intended location when they wanted to get there, then you are not on a "slow" highway. If the federal transportation office set a national goal of someday having 10 lanes going north for every north Interstate Highway, so every car could go at least the speed limit of 70 mph, you would typically only add those new 7 lanes beside those existing 3 lanes as they were needed by the cars traveling on it. Having seven additional lanes going north, added right now right beside those existing three lanes, doesn't make you go any faster when going a constant 70 mph speed limit. Instead, you have 7 lanes too many that are a waste and installed way too early. Thankfully, additional lanes of Internet bandwidth in KY K-12, in comparison to roads, can be quickly added as they are needed versus being activated and paid for a decade before they are needed.

KY K-12 is "the" national leader in cloud based computing and recently completed our largest online testing in state history. If KDE had a "slow" Internet service for 165 of 171 our districts, KDE would have nearly every

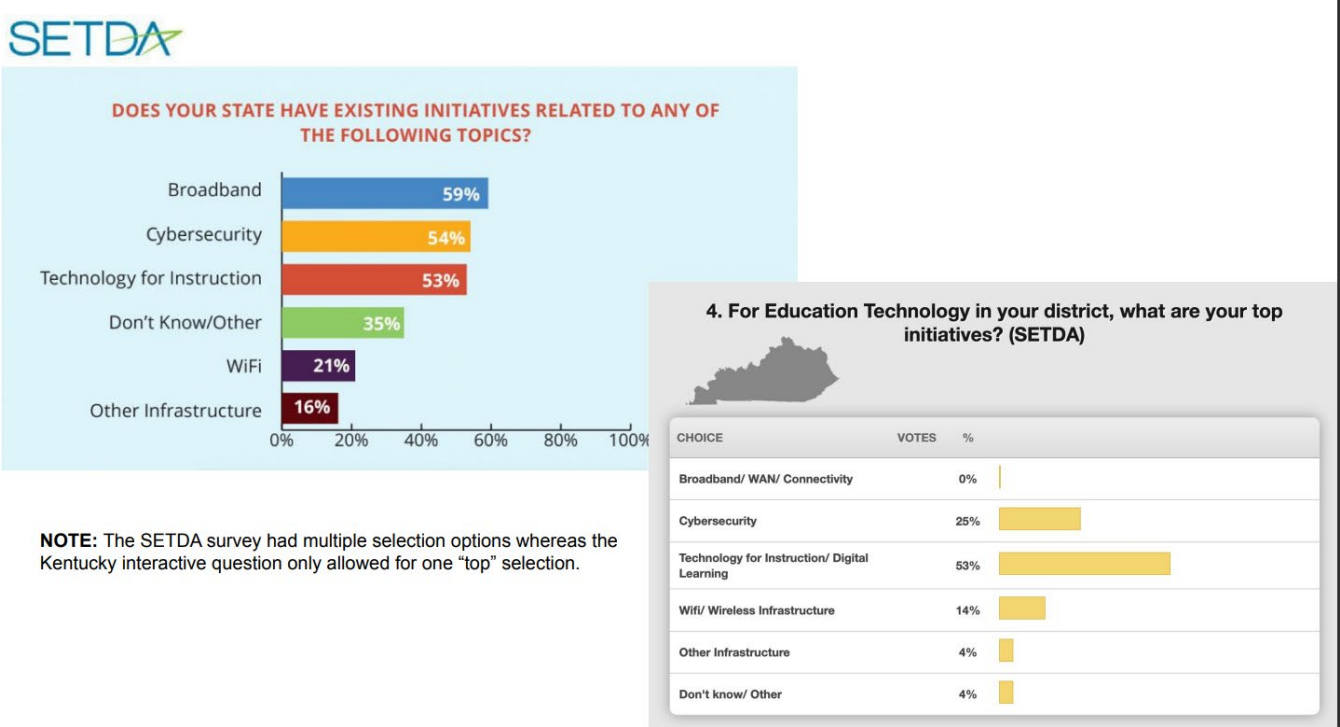
district constantly screaming to KDE and anyone else, each day since every major KY K-12 instructional, communication and administrative service counts on our KY K-12 Internet service. We don't need those 7 additional lanes built in advance since every district and school has already been fibered for many years, thus we can very quickly increase the flow of Internet as needed to a district much like you would turn a handle to a water facet to increase the flow as needed. Similar to your water faucets in your kitchen sink, it's very rare that you turn both knobs so they are both pouring out water full blast for everything you do, which would be wasteful and needlessly increase your monthly water bill. You typically turn on enough water to do the task. Similarly, you don't pay for 65% more Internet bandwidth than you need at your home or at a school.

The topic of Internet access that KDE provided to all 171 KY K-12 school districts should have been applauded (i.e., being good stewards and frugal with KY taxpayer funds and Internet usage, only using KY taxpayer funds to buy the amount of Internet service that is truly needed by a district as it is needed, having an extremely reliable, sufficient and capable KY K-12 Internet service that KDE has provided to all school district for close to 30 years) versus having our KY K-12 Internet service to all 171 district being characterized as “slow” for 165 of our districts and chastised for not buying additional 65% Internet that would sit idle in order to reach this FCC goal of 1 Mbps per student. The FCC goal of 1 Mbps per student rightfully has no due date, so no one is behind or awful by not already being at 1Mbps per student.

Our KY K-12 Internet design has allowed us to be very efficient and maximize the Internet bandwidth we already have and at the same time allows us to quickly raise it for any district that has a proven increased need (e.g., the increase in the number of student computers to a 1 to 1 ratio in a district). If we are not the very best and most efficient in the nation, then we are one of the top 2-3.

The more accurate way to phrase the Internet experience is “do you have enough that is fast enough to do what you need to do in a timely fashion for a good educational experience”. In KY K-12, for all 171 districts, that answer is yes. Paying for another 65% of Internet bandwidth per student, does not improve any of that but instead would be a total waste of KY taxpayer funds. It's very inaccurate to describe an Internet service as being “slow” because you don't have 65% more bandwidth than you really need. We do not have 165 districts with “slow Internet” that keeps them from being able to accomplish what they need to accomplish when using our KY K-12 Internet service.

September 2022 response of KY K-12 districts in comparison to the national SETDA report that came out in Sept 2022.



Link to PDF of Lexington Herald

article: <https://drive.google.com/file/d/1egrurN3h4iqdASDewkiP4Jf7lZeYpo4y/view?usp=sharing>

(1:18:22) KETS Offers of Assistance – Letters in the amount of \$12/ADA went out last week to 143 school districts and the Model Lab. The acceptance date is December 9th and it is important to get all your paperwork in timely. Keep that date in mind and work towards that deadline.

(1:23:30) KY K-12 EdTech Contracts Status Awareness –

- Next Generation K-12 Internet (NGKI) RFP - RFP 758 - 23000000008, Buyer Office Of The Controller: Susan Noland, Published: 7/8/22 Closed On: 8/29/22 3:30 PM EDT. Services provided by this Contract are expected to be fully implemented and in operation at all locations by July 1, 2024.
- McAfee Anti-Virus - Acquired, merged then rebranded as Trellix by parent company Symphony Technology Group (STG)
- KETS Network Products & Services Extreme Contract MA 758 2100000648- Integration Partners Corporation (IPC) reseller was acquired by ConvergeOne, Inc. (C1). Effective 9/12/22.
- GMAP- current contract with HMB set to expire March 23, 2023, after all possible extensions and a solicitation to be issued to award a new contract for the Grant Management Application System.

(1:23:53) Upcoming Student Technology Leadership Program (STLP) Regionals Update -



Regional registration is open now through November 1st for the November 16th Regionals. We need you help on November 16th. Sign up here: <https://stlp.education.ky.gov/nosubjudge> . "No Sub Needed" Judge Sign Up. **WHAT IS A "NO SUB NEEDED" JUDGE?** Teacher and substitute shortages are impacting the ability for schools to participate in STLP. We need support from educators who may not require a sub.

New STLP Student Challenge – DATA CHALLENGE – check it out and make your staff aware.

For news & updates and a One-Stop-Shop to Review All Important Recent STLP Info, check out <https://stlp.education.ky.gov/news/>.

Thanks for joining us today!